

CHINTAMANI RESIDENCY

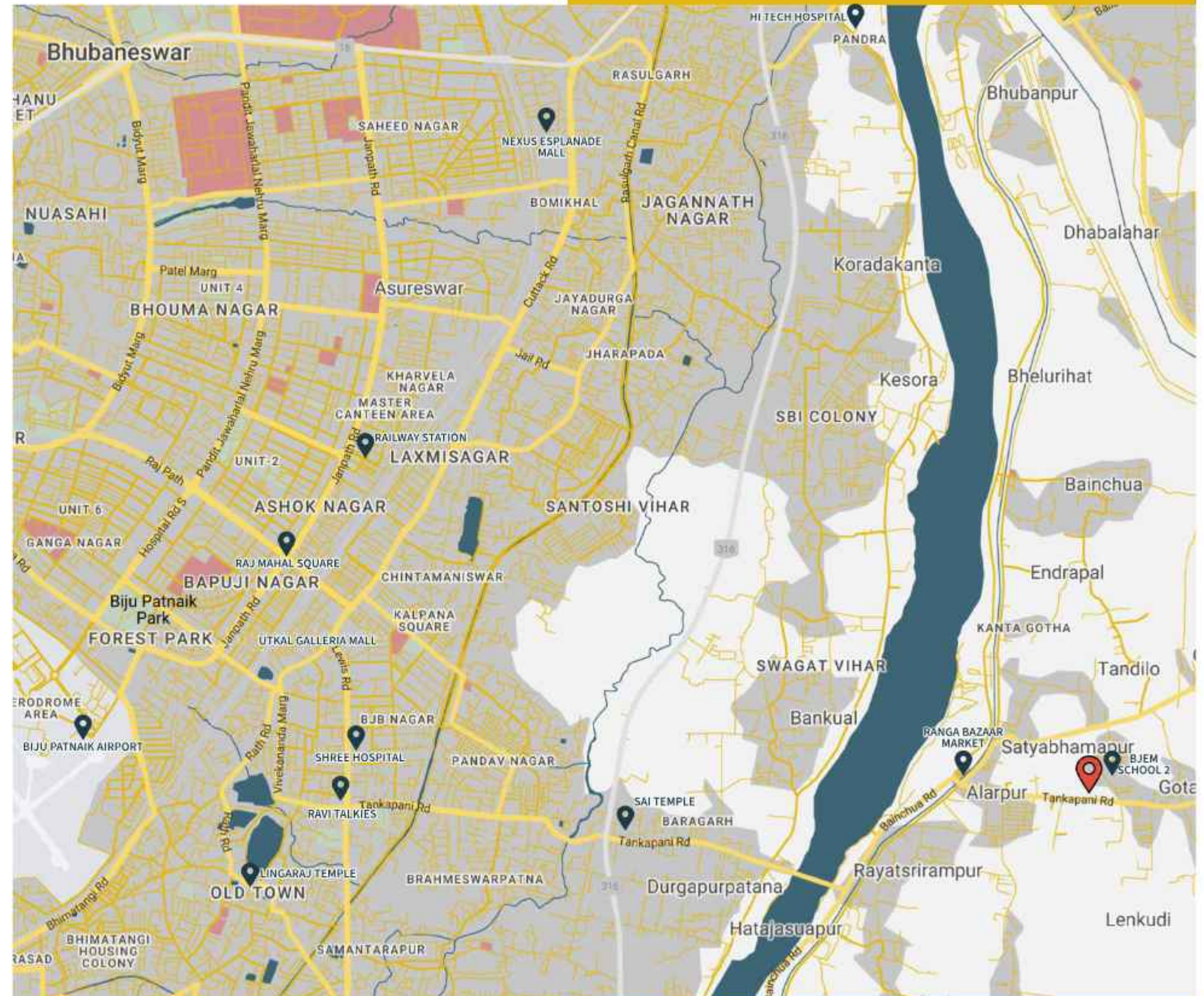


TM CONSTRUCTIONS

Distance between you and convenience.

BJEM School II	1 min
Ranga Bazar	1 min
Sai temple	5 min
Ravi Talkies	10 min
Shree Hospital	12 min
Utkal Kanika Galleria	14 min
Lingaraj temple	14 min
High tech Hospital	15 min
Biju Pattnaik Airport	20 min
Railway Station	20 min

Map not to Scale.
Approximate Distance.



Location
LOCATION



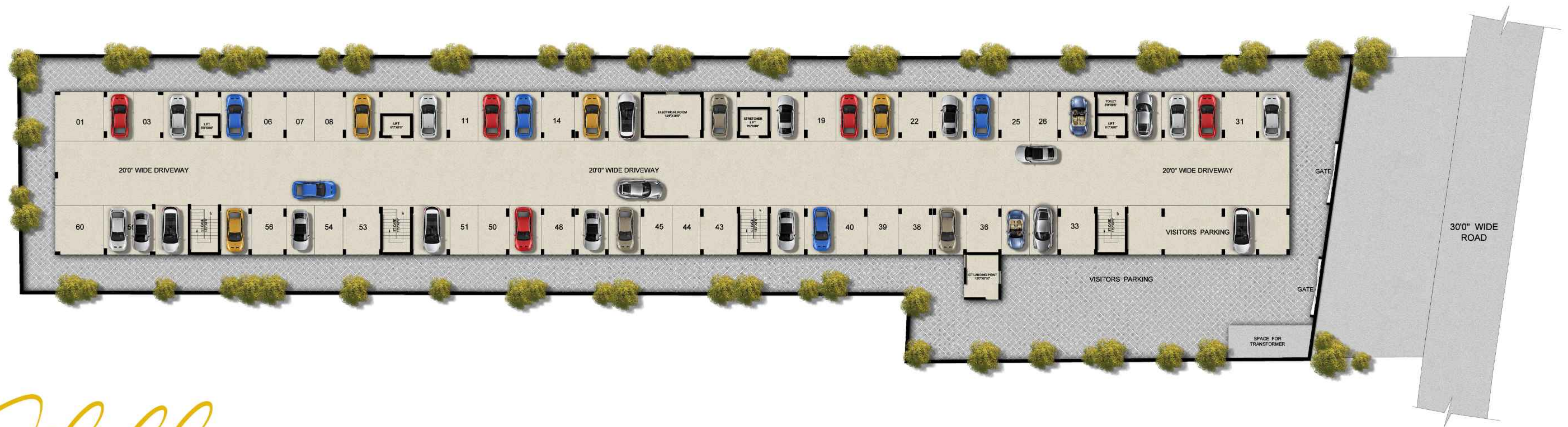
Scan for Location

An aerial photograph of the Chinatamani Residency, a modern multi-story apartment complex. The building features a mix of white and grey facades with prominent vertical architectural elements. It is surrounded by lush green trees and vegetation. A swimming pool is visible on the left side of the building, and a colorful rooftop garden or playground area is visible on one of the upper floors. The overall scene is bright and sunny, with shadows cast by the trees and building.

Welcome to **Chinatamani Residency**, where affordable luxury meets contemporary living in the heart of Satyabhampur. Situated amidst the serene landscapes and bustling urban life, Chinatamani Residency offers a harmonious blend of modern amenities and comfort, catering to those seeking a refined lifestyle without compromising on affordability.

**Affordable
Luxury
Living**

RERA NO. - RP/19/2023/01070



Still FLOOR PLAN

Experience the effortless convenience of our meticulously planned parking amenities, where your vehicle and bicycle are provided a sanctuary in a setting that's not only functional but also exceptionally comfortable. Our dedication to your accessibility extends beyond parking; with strategically positioned stairs and elevators, each stride towards enhanced living is seamlessly convenient.





First FLOOR PLAN

With meticulously crafted spaces and thoughtful design, our residences redefine the standards of comfortable living, ensuring that every moment spent here is imbued with tranquility and elegance. Experience the epitome of affordable luxury living at Chinatamani Residency, where every detail is curated to elevate your living experience.



Flat Details

3BHK

BUILT UP AREA = 1173 SFT.

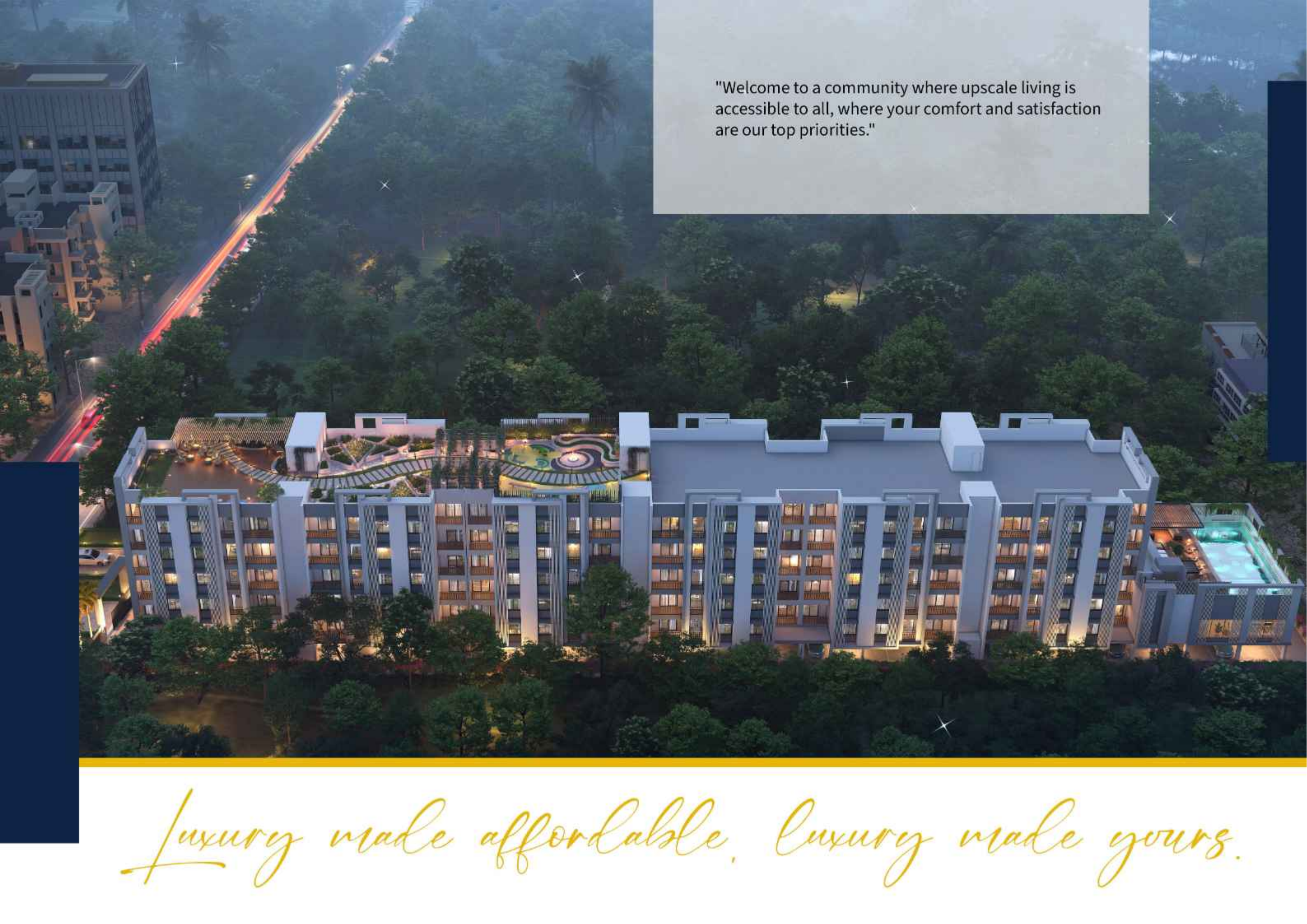
CARPET AREA INCLUDING BALCONY = 1073 SFT.

BALCONY AND UTILITY AREA = 122 SFT.



"Embrace the comfort of home, where every corner tells a story. In a 3 BHK apartment, find the perfect blend of space, warmth, and possibility."

Three Dimensional View of a Typical Flat

An aerial night photograph of a modern, multi-story apartment complex. The building features a light-colored facade with vertical architectural elements and numerous lit windows. A swimming pool is visible on the right side of the building, and a landscaped area with a circular feature is on the left. The complex is surrounded by dense greenery and trees. In the background, a road with light trails from cars is visible. The overall scene is illuminated by the building's lights and the ambient night light.

"Welcome to a community where upscale living is accessible to all, where your comfort and satisfaction are our top priorities."

Luxury made affordable. Luxury made yours.

Community Hall

Discover our dynamic community hall, a hub where residents come together for gatherings, events, and shared experiences. With modern amenities, versatile event spaces, and ample seating, it's the perfect venue for any occasion. From birthday parties to yoga classes, our community hall fosters connections and creates lasting memories.

Join us in celebrating community spirit and creating meaningful connections in our vibrant gathering space.



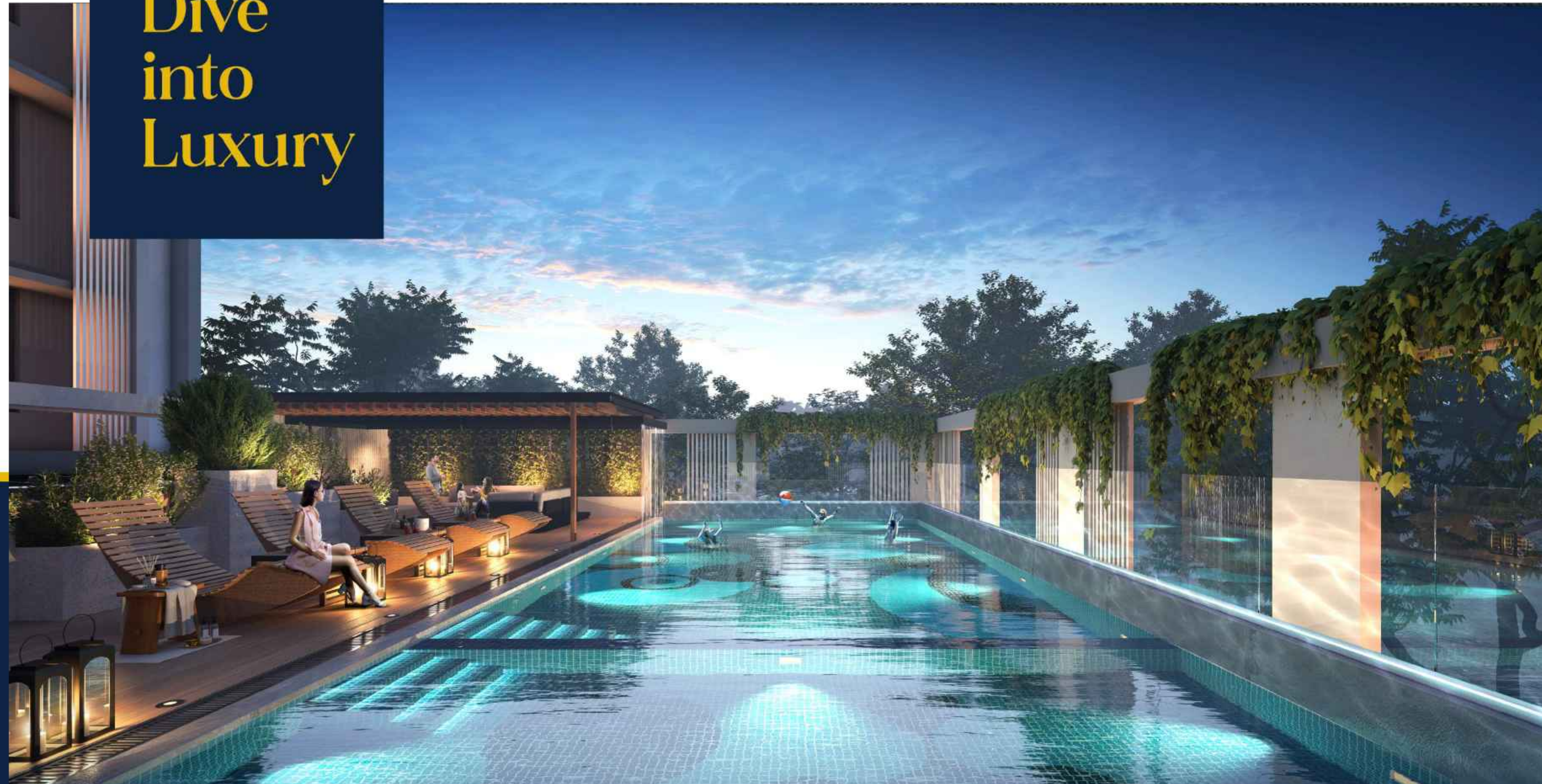


Welcome to our state-of-the-art multi gym, where fitness meets convenience in the heart of our residential community. Our meticulously designed amenities include a fully equipped multi gym, providing residents with a comprehensive fitness experience without ever having to leave the comfort of home.

Say goodbye to crowded public gyms and hello to the convenience of having everything you need for a fulfilling workout just steps away from your doorstep.

Multi Gym

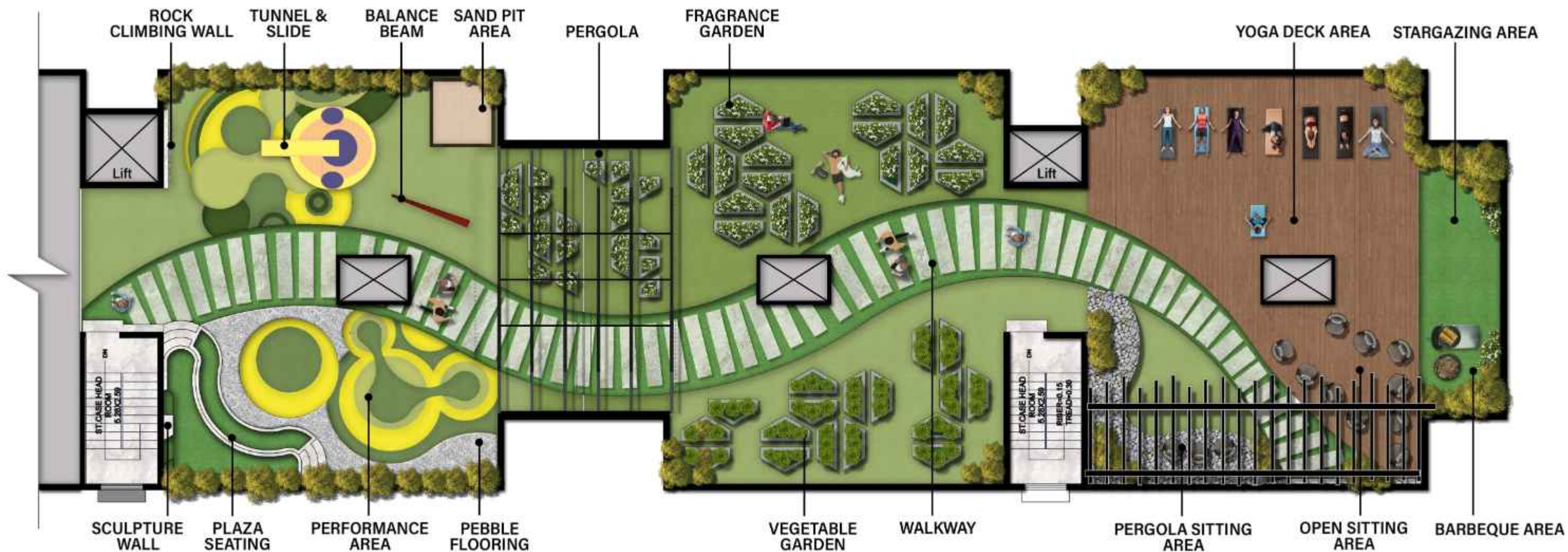
Dive into Luxury



Immerse yourself in the serenity of our pristine pool, nestled amidst verdant surroundings. Enjoy exclusive access to this tranquil haven, perfect for a refreshing dip or a relaxing swim. Experience the ultimate in relaxation as you lounge by the water's edge, soaking up the sun's warmth.

Discover your personal oasis at Chintamani Residency, where luxury meets tranquility.

*Paradise
Awaits.*



Terrace

LANDSCAPE PLAN

Escape to your private terrace garden oasis – where ,
Nature meets Luxury,
right at home.





Discover the tranquil beauty of urban landscapes from your own private terrace garden sanctuary, where the city skyline becomes a backdrop to your personal paradise.



In the silence of nature, the mind becomes still, and the heart opens wide, inviting the beauty of the landscape to become a mirror for the soul's deepest truths.

**Elevate
your living
experience.**



EV CHARGING POINT

Exclusively for our residents, we provide dedicated EV charging points. Rest assured knowing that you can conveniently charge your electric vehicle right on your property as we embrace the future of transportation.

SOLAR POWERED

Harnessing the power of the sun, our apartments are equipped with state-of-the-art solar panels to provide clean, renewable energy. By choosing solar, you're not only reducing your carbon footprint but also lowering your utility bills.

24x7 POWER BACKUP

A diesel generator that can provide 24x7 power backup for common areas, even during a massive power outage.

360 DEGREE CCTV SURVEILLANCE

Your safety and security are our top priorities. That's why there's CCTV surveillance throughout our apartment community.



Amenities

STRETCHER LIFT

Offering generous space to accommodate individuals and bulky items alike, our stretcher lift emphasizes comfort and practicality. Bid farewell to cramped confines and welcome a journey of smoothness and spaciousness.

CAR WASH BAY

Located conveniently on-site, our car wash bay is here to keep your vehicles sparkling clean without the hassle of leaving home.

PIPELINE GAS

Experience the convenience and efficiency of pipeline gas for cooking in your new home! Say goodbye to the hassle of changing Cylinders or worrying about running out of fuel mid-meal. With pipeline gas, you can enjoy uninterrupted cooking experiences every day.

VIDEO DOOR PHONES

Modern security, simplified. Our cutting-edge Video Door Phones seamlessly integrate safety and convenience into your daily life.



Amenities

SPECIFICATIONS

KITCHEN

Granite cooking platform, premium ceramic tiles with a dado up to 3 feet height over the platform with stainless steel kitchen sink.

ELECTRICAL

Concealed copper wiring with provision for light point, AC, TV & Telephone and premium modular switches.

TOILET/BATH

Hot and cold lines in shower and basin
Chrome-plated fittings of Jaquar/Kohler or equivalent
make Sanitary Fixtures of Cera aqua/Roca/Kohler or equivalent make UPVC louvered ventilators, frosted glass and installation of Exhaust fan in all toilets

DOORS

Seasoned sal and melamine polish over veneer panel on door frames Main door: Teak veneer and melamine finish were used to make the flush/modular door. Other doors: Teak veneered flush door with Melamine shine.



SPECIFICATIONS

STRUCTURE

Earthquake-resistant RCC frame structure. RCC of M35 grade concrete

CEMENT

OCL/Ultratech Emami.

STEEL

Fe500D of Tata/SAIL/Vizag/JSPL

FLOORING

Granite step tiles on the staircase Master bedroom -
Premium laminated wooden flooring
Lobby/Drawing/Dining/Bedroom - Premium vitrified tiles flooring
Toilet /kitchen/balcony floors - Premium Anti-skid tiles
External driveways - Heavy duty tiles

BALCONIES

Decorative MS/SS railings.



About

TM Constructions started 10 years ago and has since excelled in all aspects of real estate, from identifying and acquiring property to marketing facilities and maintenance. We have particular expertise in building luxury homes, and our homes are sculpted perfectly for homebuyers who want to live in magnificent and exclusive homes.

D-20, BJB Nagar, Bhubaneswar-751014

Mob.- 8018084142

Email - sales@tmconstructions.in



www.tmconstructions.in